



2021

ANNUAL
REPORT

OUR MISSION

Girl Scouts builds girls of courage, confidence, and character, who make the world a better place.

GIRL SCOUT PROMISE

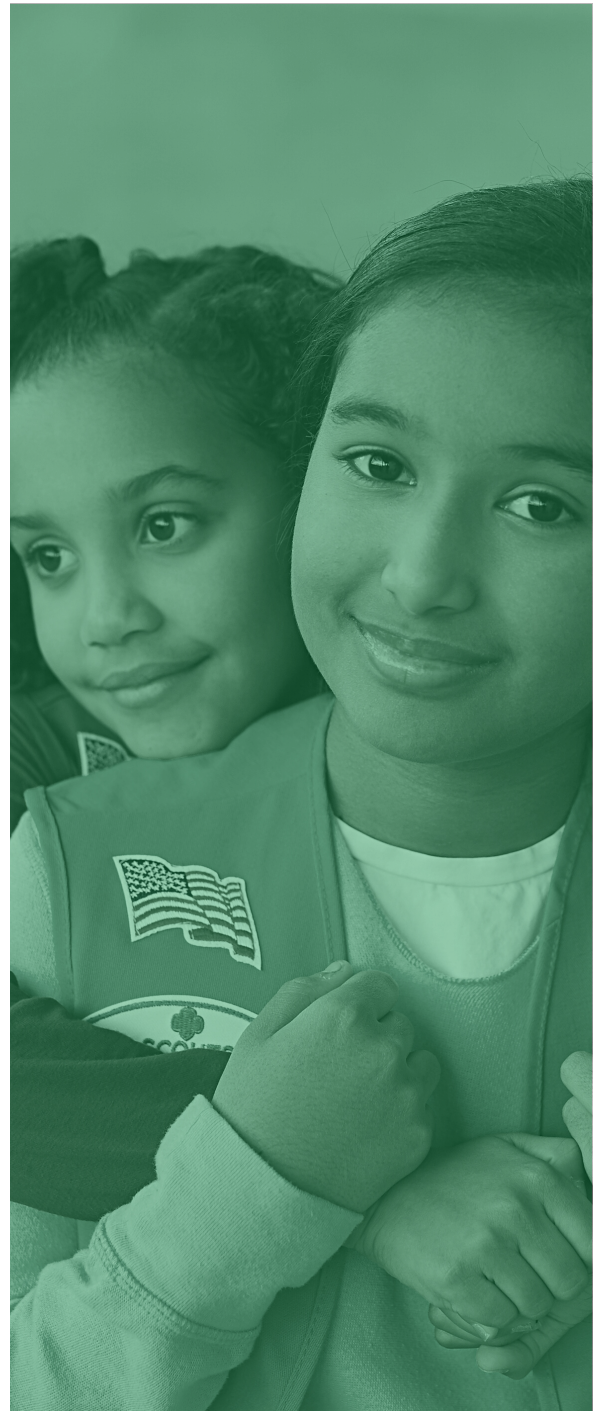
On my honor, I will try:
To serve God* and my country,
To help people at all times,
And to live by the Girl Scout Law.

**Members may substitute for the word God in accordance with their own spiritual beliefs.*

GIRL SCOUT LAW

I will do my best to be
honest and fair,
friendly and helpful,
considerate and caring,
courageous and strong, and
responsible for what I say and do,
and to
respect myself and others,
respect authority,
use resources wisely,
make the world a better place, and
be a sister to every Girl Scout.

Our council, encompassing seven counties, sits on the original homelands of indigenous peoples. It is their care and keeping of these lands that allow us to be here today. As we affirm our Girl Scout values of inclusiveness and diversity, it is our honor and responsibility to help broaden awareness throughout our community and ensure that our members feel represented and valued.



Our 2021 fiscal year was all about rebounding from the daunting challenges of 2020. Our traditional modes of connecting were still unavailable as many kids learned remotely and continued to be largely secluded. Meanwhile, the organization, our volunteers, and Girl Scouts showed an eagerness to remain involved and find safe ways to close the gaps between us all.

Though our revenue was down this year, we're proud to share that our finances remained strong. Our organization qualified for the Payment Protection Program, receiving necessary COVID-19 relief as a result. With the incredible support of donors, we were able to keep engaging with our Girl Scouts while remote. We are so very thankful for all the hands that joined together to lift the weight of this year's obstacles, that helped us bridge divides between our community's youth and us.

We dove deeper into our DEIA-RJ (Diversity, Equity, Inclusion, Access, and Racial Justice) work, taking extensive trainings, learning from audits, and reexamining our efforts and responsibilities. To aid inclusion, we added physical improvements to our structures, and we made adjustments in our language and the way we serve Girl Scouts. Our partners at Visceral Change, Ragland and Wilhite, and Adiba Nelson were instrumental in this process.

Our staff came together to find creative solutions to offer our beloved programs and events. Summer camp was able to return safely and successfully after a year of our virtual Camp Log On. We were able to host both overnight camp at Camp Whispering Pines and Day Camp at the Hacienda, as well as Camp Log On again for those at home. Though camp sessions were smaller per safety protocols, each session was full of campers happy to be back together again. It was much needed.

As we thought about our 2021 year, we kept coming back to gratitude, and we hope you see this in our Annual Report. We're grateful for our donors and supporters who ensure that Girl Scouting continues. We're grateful for our volunteers who make everything happen. We're grateful for those who give their support in any way. Because of you, Girl Scouts experience lifelong benefits; they have a stronger sense of self, act with positive values, seek challenges, maintain healthy relationships, and better their community. From the bottom of our hearts, thank you for making a difference and being champions of girl ambition.



Kristen Garcia-Hernandez

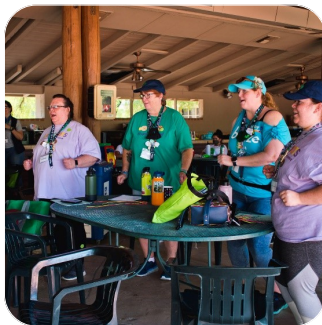
Kristen Garcia-Hernandez, CEO
Girl Scouts of Southern Arizona



Teresita Flores

Teresita Flores, Board Chair
Girl Scouts of Southern Arizona

APPRECIATION FOR OUR VOLUNTEERS

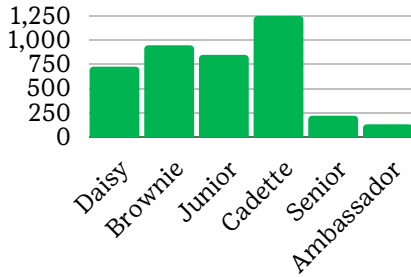


Girl Scouts of Southern Arizona—its programming, opportunities, and reach—is only possible because of our volunteers in the community. Of all the gifts given to the organization, volunteering is one of the most precious. When a volunteer signs up, they are entering into an interactive, nurturing space where they can show Girl Scouts that they belong. They can support Girl Scouts in their pursuit of passions and the amplification of their voices. When someone becomes a volunteer, they are joining a network of good, stepping into a long line of helpers who value connection, equity, and service.

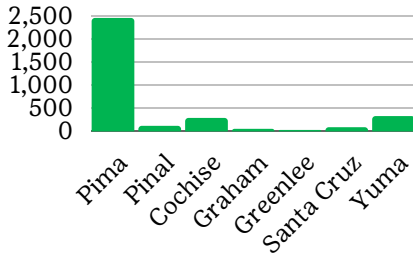
We know that volunteerism requires more than the simple commitment of shifts or sign-up times. It occurs in the planning the night before a troop meeting and the weeks-long dreaming sessions with Girl Scouts about cookie goals. For every hour a volunteer may be actively serving, there are countless more we don't see that are vital for our Girl Scouts. The service given to Girl Scouts of Southern Arizona extends past a meeting, a booth, or even a year. The good that comes from volunteering ripples out into the future, creating lifelong skills and confidence for a Girl Scout.

Our volunteers are our very foundation, and without their support, our mission would crumble. To our volunteers, thank you for holding up tomorrow's leaders. Thank you for affirming their ambition, for teaching them to stand up for their values, and encouraging them to be thoughtful, compassionate, and strong. Because of you, our world is a better place.

Girl Membership by Age Level



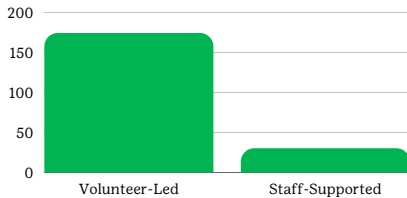
County of Residence



*A note on our county numbers: There are 780 members from counties not included in our service area or who do not have county information included in our system. For that reason, the sum total of percentages does not reach 100% of our total numbers.

Troop Breakdown

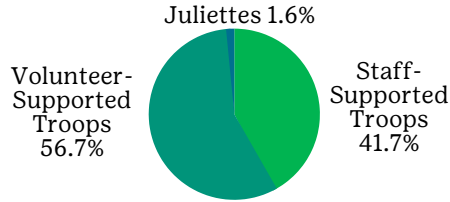
Total Troops: 204



FY21 Cookies

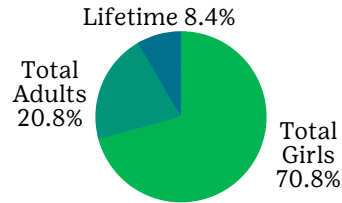
- FY21 Total Packages Sold - 633,535
- FY21 Total Girls Participating - 1,259
- FY21 Average Packages Sold Per Girl - 503
- FY21 CFOH Packages - 36,786

Girl Scout Participation Breakdown

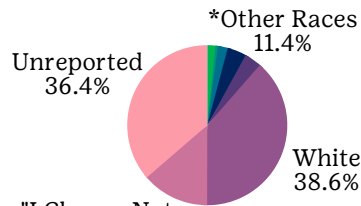


Member Breakdown

Total Members: 5,773

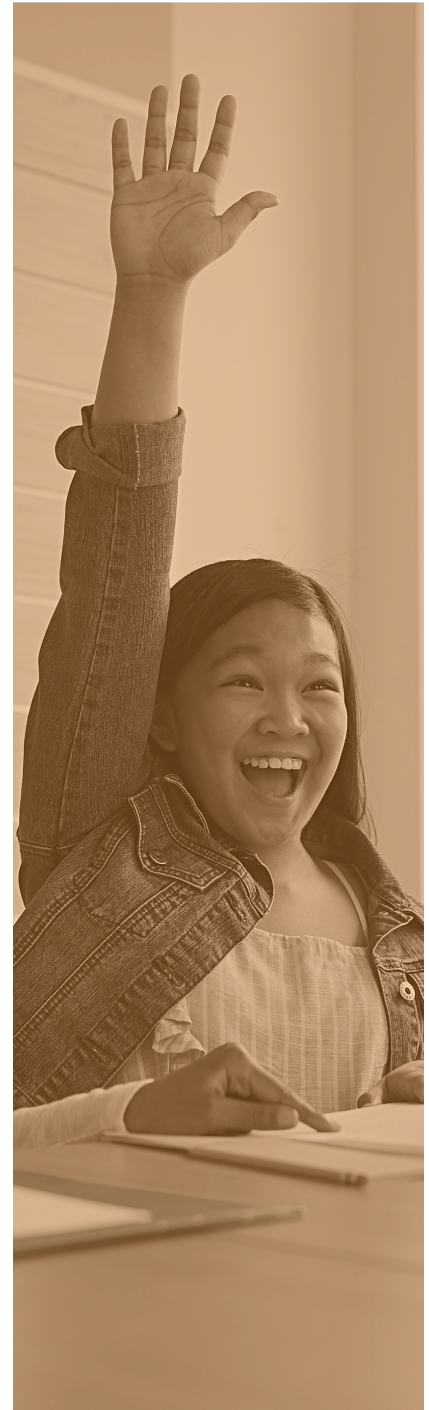
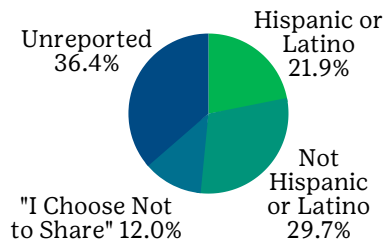


Member Race



*Encompasses the following: Other Races, Two or More Races, Black or African American, American Indian or Alaskan Native, Asian, Hawaiian or Pacific Islander

Member Ethnicity



Throughout much of 2020, we were doing our best to engage with girls amidst lockdowns and uncertainty. This year, with all of the new ways of life, we continued to reach out, having learned new skills for maneuvering through the remote landscape. Noticing that Girl Scouts were no longer wanting Zoom meetings, our program team added tactile tools that could keep interest high. In the summer, we gave local schools and group homes Camp Log On boxes, so they could enjoy robust activities and games. In the wintertime, we took seventy-five activity boxes to La Paloma Family Services for foster families during the holidays. Each box had supplies for four people to encourage interaction and lift spirits.

We focused on preserving relationships, checking in with key coordinators and principals in schools to ensure that our connections remained strong. Showing schools our consistency, maintaining relationships, and building trust was paramount, so that our re-entry to schools, when possible, would be smooth. We are heartened to share that, at the end of our fiscal year and the beginning of the next, we entered into twenty-eight schools—the highest number in recent years.

So much has changed in these last two years, and we've been able to witness how our Girl Scouts have been affected. We've shifted our programming to reflect and be conscious of the ways they've changed. We offer mental health breaks and build space into the day for them to build community, spend time unwinding in nature, and slowly re-learn social interactions. It's become clear that, for the younger generation, the value of programs that harness social and emotional learning has grown significantly.





During this fiscal year, we provided programming for our local detention center in a remote capacity. Though they have been closed to visitors during the pandemic, we've stayed in touch with the coordinators and continued to drop off activity boxes that supply Girl Scout curriculum, for which there was a high demand this year.

"The Girl Scout kits that have been provided to our female youth have assisted them with staying connected to what is important to them. The life skills and reflection from completing these have helped keep our youth engaged, involved, and [given them] a positive way to express themselves. The fascinating art projects that come out of the kits are really nice to view. Molding clay, Bliss box, and vision boards are all favorites. Our females look forward to the new kits coming in, as a way to continue to learn and grow together. We are so appreciative to have the opportunity to connect with the local Girl Scout community."

- Pima County Training & Programming Supervisor

As we looked onward, we prepared to be more actively involved with our group homes, Adelante Jovenicitas (also known as AJ), and prisons again in the winter of 2021. Our staff kept in contact with coordinators and planned for the future, counting down the days until we could finally re-enter these spaces again to see old friends and make new ones. Excitement with the staff was contagious because we all know that serving our Girl Scouts face-to-face is such an important part of the Girl Scout Leadership Experience. Providing in-person programming allows our staff to connect with Girl Scouts, to notice any changes, and have a greater impact.

One of the special programs that we are preparing to return to is Girl Scouts Beyond Bars (or GSBB). This program connects girls with their incarcerated mothers to reduce trauma, preserve and strengthen the parent-child bond, and increase self-worth and self-esteem. Together, mother and daughter work side-by-side on Girl Scout activities, coming together as a team to develop skills and work towards a common goal. This program is central to our mission, and as renewed access to prisons becomes a possibility in the near future, we are so very excited to plan for these reunions.

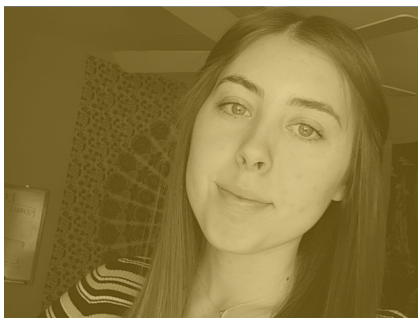


In-person camp returned after a year, much adapted with new safety precautions to remain safe during the pandemic. Our week long residential camps filled with campers who were overjoyed to be back in nature and with their peers. Campers spent their time in pods, living, eating, and playing together. The structure of summer camp loosened, a reflection of where campers were at. Whereas camp schedules have typically accounted for every minute of the day with activities, this summer allowed space to breathe, heal, and connect.

As always, we offered multiple camp opportunities for campers to choose. One camp program we launched was called Brain Camp, the first in-person program with University of Arizona since before the pandemic. Brain Camp is a bilingual program for Latinx girls and their families, in which they learn all about the brain's structure and responsibilities. Produced by Twin Cities PBS and funded by the National Institutes of Health, this curriculum was aimed at encouraging Latinx youth to consider diverse neuroscience-related careers as viable paths while also breaking the stigma of mental health by normalizing discussions around the matter.

Brain Camp, as a pilot program, was launched with the idea of it continuing, the seeds of the program growing a larger garden. We're glad to share that the program has certainly grown roots. After a successful first year, we're preparing to offer the program next year, too. The neuroscience undergraduates who assisted with the program last summer (and are first generation college students) were hired as program facilitators to continue working with our Girl Scouts, and they'll be returning to teach Brain Camp again. We are looking forward to seeing this camp program grow in the community!



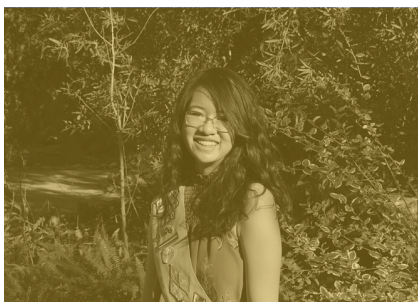


Emily Schweigert

Troop 2164, The Next Step: Finding Your Career

Emily planned, organized, and implemented a virtual conference for High School students that featured speakers from local colleges and universities who presented on topics around trade jobs, career assessments, and college majors. Emily was the first Girl Scout in our council to pivot because of COVID-19, having one of her first Gold Award Committee meetings in Spring 2020 on Zoom.

Emily was passionate about taking action to provide more information and opportunities to her peers about post-graduation opportunities, and she succeeded with her Gold Award project. Emily was also our council's GSUSA Gold Award Girl Scout Scholarship recipient. Emily is now a student at University of New Haven (CT), studying Criminal Justice.

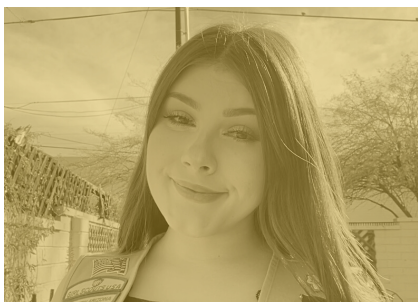


Natalie Mak

Troop 640, Encouraging Elementary School Age Children to Read More

Natalie took action to increase a love of reading in school-aged children by creating a reading program at a local elementary school. Natalie researched and identified a local elementary school that could benefit from the program and collaborated with school staff to create a sustainable reading program.

Natalie worked to build a program that was enticing to students and staff aimed to increase the students' love of reading and potentially increase the school's academic rating. Natalie did have to adjust her project due to COVID-19, staying committed to providing all the components that were laid out in her original project plan.



Sophia Smith-Gatto

Juliette, Identity and Allies: Understanding the LGBTQ+ Experience

Sophia put together a virtual conference around the LGBTQ+ experience for parents, allies, and community members to learn more about the LGBTQ+ community, hear stories, and share resources to support queer youth. A variety of community partners shared resources, experiences, tips, and stories with folks on the

live zoom, and Sophia created a beautiful website where the archived conference videos are available. Sophia surveyed her conference attendees and found folks gained empathy and a better understanding of the LGBTQ+ experience after attending the conference. Sophia's entire project was completed despite the challenges presented by COVID-19.

Open your phone's camera and hover it over this QR code to view Sophia's website!





Riley M.

Troop 1224, AIRES Story Book

Riley took action to create reusable, customizable story books for disabled adults at AIRES in Sierra Vista. Riley worked with the clients at AIRES to identify topics and create the stories. Riley put together a how-to guide for the books to be sustainable. Riley was excited to be creative and imaginative with her Silver Award, while also persevering through challenges presented by COVID-19.



Liliana and Marin

Troop 217, Protecting Pets in the Desert

Liliana and Marin took action to protect pets in the desert. They created informative videos and flyers to share with the local community (vets, police department, and nurseries) about potential dangers to pets specific to our Sonoran Desert. Marin and Liliana believe their project will impact the community by providing pet owners the information and confidence to keep their pets safe.

Their informative video was shared by several community partners and has over 500 views. Use your phone's camera to open this QR code. It'll bring you to Liliana and Marin's YouTube video!



GOLD / \$2,500+

Anonymous
 Arizona Community Foundation
 AZ Daily Star Sportsmen's Fund Inc.
 Bank of America Charitable Foundation
 Bayer Marana Greenhouse
 Benevity Community Impact Fund
 Bonnie Kay
 Cardinals Charities
 Centene Corporation / Arizona Complete Health
 Comcast Communications
 Community Foundation for Southern Arizona
 Connie Hillman Family Foundation
 Crest Insurance Group LLC
 Gail Gurney and Celia McMurry
 Geico Philanthropic Foundation
 George Kalosa Trust
 Geraldine Crow
 Girl Scouts of the USA
 Hughes Federal Credit Union
 Judith Bliss
 Long Realty Cares Foundation
 Margaret Conkey Goodwin Campership Fund
 Margaret T. Morris Foundation
 Pima County Community Development
 Pima Medical Institute
 R.V. City
 Raytheon Missile Systems
 Rebecca Johnson
 Ronald Hoffman
 Schwab Charitable Fund
 Southwest Gas Corporation
 The Hazen Family Foundation
 Treasurer of Pima County
 Truly Nolen of America, Inc.
 Tucson Electric Power Company
 Tucson Medical Center
 United Way of Tucson & Southern Arizona
 Valley of the Sun United Way
 Virginia Clements
 Walmart
 Wells Fargo Advisors Fin Network, LLC (Wells Fargo DAF)

SILVER / \$2,500-\$501

Ann Markewitz
 Anna Maiden
 Anonymous
 BeachFleischman PC
 Brooke Valmont
 Cameron Wyatt
 Carolyn Masters
 Charitable Adult Rides & Services, Inc.
 Charles Delmar Foundation
 Cheryl Horvath
 Country Fair White Elephant, Inc.
 Cynthia Petti
 Cynthia Stevens
 Eleanor Sergi
 Ellen Howlett
 Emergency Reporting
 Emily Scobie
 Facebook Payments
 Fidelity Charitable Gift Fund
 Gloria Tileston-Tharp
 Grace Evans
 Helen Schaefer
 Holualoa Companies
 Jack Walters
 Jade Star Acupuncture & Wellness
 Jane McCollum
 Jessica Brandt
 Julie Bennish
 Karen Hess
 Kathryn Cox
 Kristen Garcia-Hernandez
 Lela Freiman
 MacGyver Tank
 Margaret Maxwell
 Margaret Shafer
 Marie Yonkers
 Marion Weber
 Marjorie Jorden
 Mark Dindal
 Mark Haugo
 Mary Ann Dobras

SILVER / \$2,500-\$501

Melanie Wilson
 Nancy Kilgore
 Nanette Warner
 National Christian Foundation
 National TTT Society
 Pamela Traficanti
 Patricia Penn
 Patricia Wiedhopf
 PICOR Charitable Foundation
 Quarles & Brady, LLP
 Rachel Christiansen
 Sandra Maxfield
 Sheila Kressler-Crowley
 Stephanie Rivera
 Susan Armstrong
 Tejinder Grewal
 Teresita Flores
 Thaddeus Chapman
 The CHA-07C Foundation Trust
 The Stocker Foundation
 Timalee Nevels
 Tomlinson Financial Group
 Washington Federal Bank
 William Mulek

BRONZE / \$500-\$1

Abbey Sye
 Adora Harvey
 Ainsley Limesand
 Aisha Jakachira
 Alaina Mothershead
 Alicia Vazquez
 Alison Carson
 Allison Duffy
 Allyson Baehr
 Allyson Plantz
 Allyson Scott
 Amanda Bryant
 Amanda Loveless

AmazonSmile
 Foundation
 Amy Sorensen
 Anne Jones
 Anne Michele Weiler
 Anne Wyer
 Annie Sparks
 Anonymous
 April-Kay Hardcastle
 Arizona Complete
 Health
 Autumn
 Rentmeester
 Barbara Foster
 Barbara Hall
 Barbara Novak
 Barbara Reuter
 Betsy Bolding
 Betsy Green
 Betty Strunk
 Beverly Arriaga
 Brooke Bushman
 Bruce Ferrell
 Caitlyn Martin
 Calista Schafer
 Cara McCune Kent
 Carla E Meister
 Carol Cloutier
 Carol Schugmann
 Carole Wothe
 Casey Foor
 Charity Cameron
 Charlene Bates
 Cheri Schwartz
 Christopher Baldwin
 Christopher Martin
 Cindy Beggy
 Cindy Williams
 Colleen McDonald
 CPR2U, LLC
 Cristina Baena
 Cynthia Beckel
 Cynthia McDaniel

Daniela Ferry
 David Michael
 Debbie Rich
 Deborah Outcalt
 Debra McGiboney
 Diane Abbott
 Diane Culin
 Dianne Maki-Sethi
 Dominic Ortega
 Doraliz Vega
 Doris Payne
 Dorothy Turner
 Doug Wylie
 Edwina Coburn
 Eleanor Wolf
 Emily Gaspar
 Emily Morrison
 Evonne Estes
 Federated Garden Clubs of Yuma
 Florence Metz Mills
 Frances Miller
 Fry's Food/Kroger
 Gabriella Dean
 Gabriella Rendina
 Gaby Ayon
 Gail Craig-Jager
 George Bruner
 George Daranyi
 Gerry Hart
 Gillian Wettstein
 Goldie Goldstein
 Gretchen Robinson
 Hansberger Refrigeration and Electric Company
 Helen Swanson
 Henrietta Huiscking
 Holly Abbott
 Irma Gomez-Sanchez
 Jacqueline Huang
 James West
 Jan Atwood
 Jane Gray
 Janet Bobar
 Janet Wenstrand

BRONZE / \$500-\$1 (cont.)

Janeth Murillo	Kresta Leal	Martha Durkin	Rhonda Leinberger	Susan Campbell
Jason Smith	Kristin Wakefield-Heim	Mary Clements	Richard Griesser	Susan Israels
Jayme Olitzky	Kurt Fuerstenau	Mary Guss	Robert Stofft	Susan Villarreal
Jean Nelson	Larry Lebofsky	Mary Kashmar	Robert White	Suzanne Gust
Jean Tkachyk	Laura Goodman	Mary Saraceni	Roger E Moller	Suzanne Kaiser
Jeanne Wages	Lauren Sinclair	Mary Sue Feldmeier	Roger Roberts	Sydney Loudermilk
Jen Ryder	Lavina Tomer	Mary Tank	Rosi Southee	Sylvia Quigley
Jenneen Lowry	Lawrence Cohen	Maryann Hockstad	Rudolph Ricciardi	Tanya Buffalo
Jennifer Hewitt	Lhasa Compton	Matthew Unger	Ryan Lunkley	Teresa DeAngelo
Jerri Jean Lamb	Linda A. Wurzelbacher	Melanie Goering	Ryan Matchett	Therese Jezioro
Jesse Tucker	Revocable Trust	Melissa Tomlinson	Salina Riggs-Molina	Thomas Sayler-Brown
Jessica Marchbanks	Linda Alley-Sarnack	Michael Block	Samantha Aldous	Thrivent Financial
Jill Bessey	Linda Griesser	Michele White	Sandra Hansen	Vade Henderson
Jill Jordan-Spitz	Linda Mazon and Jaime	Michelle Nieuwenhuis	Sandra Rosenberg	Valerie Chandler
Jillian Hoenshell	Gutierrez	Miriam Gonzalez	Sandra Sunderland	Vantage West Credit Union
John O'Rourke	Linda Welter	Guzman	Sara McCarty	Veronica Cruz-Mercado
John Ruiz	Linda Wurzelbacher	Monica Ayala	Sarah Kennedy	Virginia M Ross
John Singer	Lisa Tsosie	Nancy Farina	Sarah More	Wells Fargo Foundation
Joy Mockbee	Lisa Zeno	Nancy McClure	Scott McKinzie	Winifred Blumenkron
Judith Gray	Lizette Cota	Nancy Woodling	Sequoia Smith	Yasel Bischoff
Judith Showers	Lorine Birger	Naoka Kimura	Shalimar Miller	Yasmin Ruiz
Judith Watson	Louis Corrales	Natalia Galarza	Sharon Jessup	Yvette-Marie Margaillan
Julianne Michael	Love Family Affiliated	Natural Grocers	Sharon O'Neal-Tracey	Z Nicolazzo
Karen Adam	Fund	Network for Good	Shelby Gaither	
Karen Friar	Ludwig Klewer &	Nicole Bolt	Sophia Raffaelli	
Karen Lunda	Rudner, PLLC	Nicole Hopkins	Stefanie Boe	
Karen Stefanelli	Luis Ochoa	Nicolette Hoffman	Stephanie Chavez	
Kari Gribbins	Lynn Gardner	Nikki Chayet	Steven Sayre	
Karin Merritt	Maggie Cozzetti	Nikki Guerrero	Story Fruition	
Karynne Binkley	Maha Nassar	Norma Jean Johnson		
Katherine Chiriboga	Margaret Boyles	Options Resolutions LLC		
Katherine Taylor	Margaret Myers	Page Marks		
Kathleen Bethel	Margaret Wilkie	Patricia Sturmon		
Kathleen Lindquist	Marianne Vivirito	Paula Collins		
Katina Koller	Marilyn Lindell	Paulette Hunt		
Kaylie Leslie-Larson	Marilyn Speert	Phyllis Webster		
Kelli Jo Yee	Marisa Allen	Rachel Gersten		
Kellie Johnson	Marisa Soto	Rachel Ostmeyer		
Kendra Scott	Mark Kelly	Rachele Peterson		
Kennedy Warrilow	Marsha Jacquay	Randy Oglesby		
Kirtlye Spear	Marsha Siegel	Regina Murphy-Darling		

We are grateful for all those who support us through workplace giving and our events, Cookies & Cocktails, Thin Mint Sprint, and Over the Edge.

Capital Campaign Investors
Sandra Maxfield (Angel's Place for Girls)

Endowment Investors
Helen Schaefer
Cheryl Horvath

Every effort has been made to include every donor, and we apologize for anyone we may have missed.

“We appreciate these treasured gifts in memory of loved ones, who meant so much to the Girl Scout movement. Together, we honor and remember them.”

In memory of:
John Harlow, Jr.
Gift made by:
Deborah Outcalt

In memory of:
Mrs. Rita Billiard
Gifted made by:
Anonymous

In memory of:
Faith Leadbeater Ridout
Gift made by:
Eleanor Sergi

In memory of:
JoAnne Wettstein
Gift made by:
Gillian Wettstein

In memory of:
Emma K. Hestand
Gift made by:
Cynthia McDaniel

In memory of:
Lorraine F. Rodriguez
Gift made by:
John O'Rourke

In memory of:
R. Bruce and Mareen D. Hughes
Gift made by:
Eleanor Sergi

In memory of:
Ruth S. Atwood Johnson
Gift made by:
Jan Atwood

In memory of:
Lois LeMay
Gift made by:
Sharon Jessup

In memory of:
William Calder
Gift made by:
Federated Garden Clubs of Yuma

In memory of:
Denise Birger
Gifts made by:

- Betsy Bolding
- Lorine Birger
- Katina Koller
- Cristina Baena
- Ludwig Klewer & Rudner, PLLC
- Mary Clements

In memory of:
Richard Watson
Gift made by:
Judith Watson



The Juliette Gordon Low Society recognizes those who make a planned gift to GSUSA or a council (or both).

These gifts can include naming Girl Scouts as a beneficiary of a: will, retirement plan, living trust, donor-advised fund, life insurance policy, remainder real estate gift, or a tax-smart gift that provides lifetime income, such as a charitable gift annuity or a charitable remainder trust.

Your thoughtful and generous planned gift will extend your involvement with the Girl Scout Movement beyond your lifetime.



Girl Scout Movement-wide Challenge Planned Gift:

Erik and Eva Andersen

Dianne Belk and Lawrence Calder

- Casey Caylor
- Cynthia Petti
- Debbie Rich
- Denise Birger*
- Dorothy Rothwell
- Ellen Howlett
- Emily Morrison
- Gloria Tileston-Tharp
- Jill Long
- Karyn Damschen
- Kristen Garcia-Hernandez
- Lynda Weigel-Firor
- Marissa Arendt
- Marsha “MacGyver” Tank
- Nancy Farina
- Nancy Schneider
- Nanette Warner
- Pamela Traficanti
- Rosi Southee
- Susan Archibald
- Suzanne Diaz
- Suzanne, Fred, & Jennifer Gust
- Terry Flores
- Timalee Nevels

**Denotes a sister who has passed*

Girl Scouts of Southern Arizona
Annual Report Financial Information
Fiscal Year Ended September 30, 2021

Statement of Financial Position

ASSETS	
• Cash	\$1,198,265
• Investments (short and long term)	\$4,326,692
• Accounts receivable (net)	\$110,588
• Prepaid expenses and deposits	\$128,665
• Inventories	\$139,902
• Land, building, and equipment (net)	\$4,778,060
<hr/>	
<i>Total Assets</i>	<i>\$10,682,172</i>

LIABILITIES	
• Accounts and other payables	\$397,207
• Deferred income	\$26,740
• Loans payable	\$659,948
<hr/>	
<i>Total Liabilities</i>	<i>\$1,083,895</i>

NET ASSETS	
• Without donor restrictions	\$7,869,603
• Without donor restrictions (board designated)	\$817,300
• With donor restrictions	\$911,374
<hr/>	
<i>Total Net Assets</i>	<i>\$9,598,277</i>
<i>Total Liabilities and Net Assets</i>	<i>\$10,682,172</i>

Statement of Activities

REVENUE	
• Product sales (net)	\$1,544,422
• Camps and program fees	\$161,727
• Individual, corp, foundation contributions	\$945,543
• United Way allocations	\$9,034
• Investment income (net)	\$582,054
• Other	\$175,228
<hr/>	
<i>Total Revenue</i>	<i>\$3,418,008</i>

OPERATING EXPENSES	
• Girl program and camp	\$1,683,551
• Membership support	\$320,550
• Volunteer support	\$127,300
• Community activity	\$163,471
• Management and general	\$976,737
• Fundraising	\$259,771
<hr/>	
<i>Total Expenses</i>	<i>\$3,531,380</i>

<i>Change in net assets</i>	<i>(\$113,372)</i>
-----------------------------	--------------------

EXECUTIVE COMMITTEE

Teresita Flores, Board Chair

Gloria Tileston-Tharp, Vice Chair

Ellen Howlett, Treasurer

Sheila Kressler-Crowley, Secretary

Pamela Traficanti, Member at Large

Kristen Garcia-Hernandez, CEO

MEMBERS AT LARGE

- *Allison Duffy*
- *Diane Culin*
- *Dr. Cheree Meeks*
- *Dr. Tanisha Price-Johnson*
- *Joe Peterson*
- *Kellie Johnson*
- *Maggie Shafer*
- *Melissa Arroyo*
- *Melissa López*
- *Nanette Warner*
- *Pat Wiedhopf*
- *Stephanie Chavez*
- *Susan Armstrong, immediate past Board Chair*
- *Tia Tsosie-Begay*
- *Yvette-Marie Margaillan*

GIRL DIRECTORS

- *Bailey Williams*
- *Garvey Blackwell*
- *Sofia Estrada*
- *Sophia Smith-Gatto*





4300 E. Broadway Blvd. | Tucson, AZ 85711 | (520) 327-2288

girlscoutssoaz.org